



Divi's Laboratories Limited

Sustainable Chemistry

Striving For Leadership Through Chemistry



PRODUCT LIST

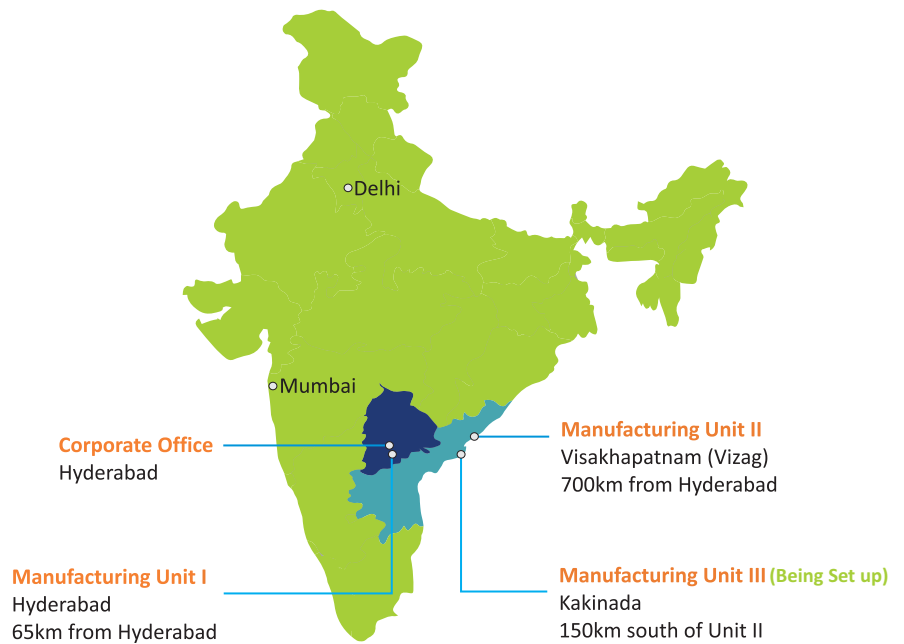
Industry Experience
29 yrs

Manufacturing Locations
2 + 1 (Unit III, Green Field)

No. of Employees
~12,000

Sales Revenue
~ \$730M (~ 18% CAGR)

Market Capitalization
~ \$6.2B



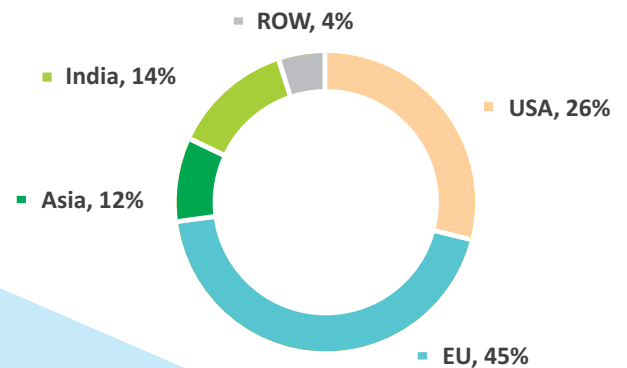
Business Segments

Our products & Services Portfolio:

Commercially Competitive

Over the entire life cycle of the product

Revenue Distribution 2018-19



GENERIC APIs

- World leader in 11 out of the 26 APIs produced
- Significant capacity & large batch sizes
- Uniform Quality across the world

CUSTOM SYNTHESIS

- Established relationships with 6 of the Top 10 Big Pharma
- 20 Years of Strategic Partnership

NUTRACEUTICALS

- Global leader in supplying carotenoids
- Offers versatile and customized solutions

One of the Largest API companies in the world
with ~ **\$730M** in revenue and exporting to more than 95 countries

* As on March 31, 2019

BUSINESS FUNDAMENTALS



Land Extent

~ 1000 Acres (~ 4 sq. km)



Capacity

~ 10,800 M³/KL*



Scientists

~ 350



QA Team

~ 400



QC Team

~ 1300



Customer Audits

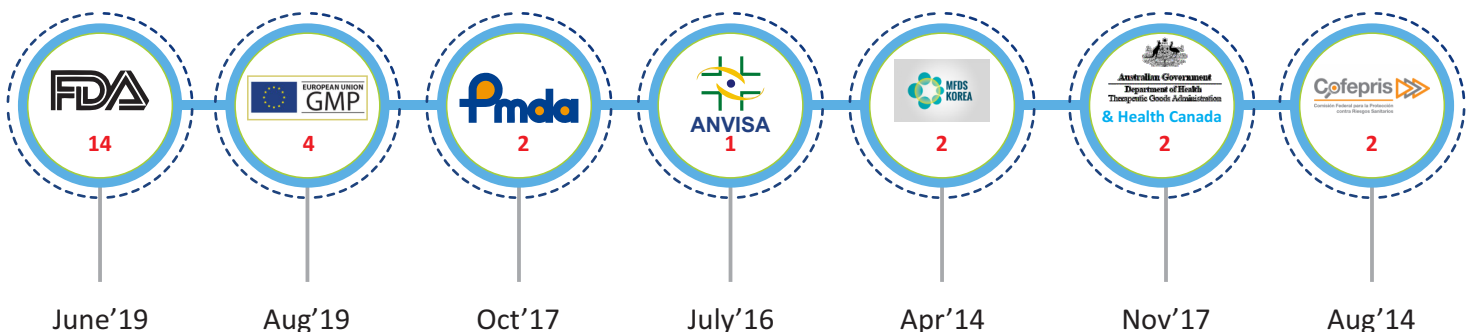
~ 2000



Regulatory Audits

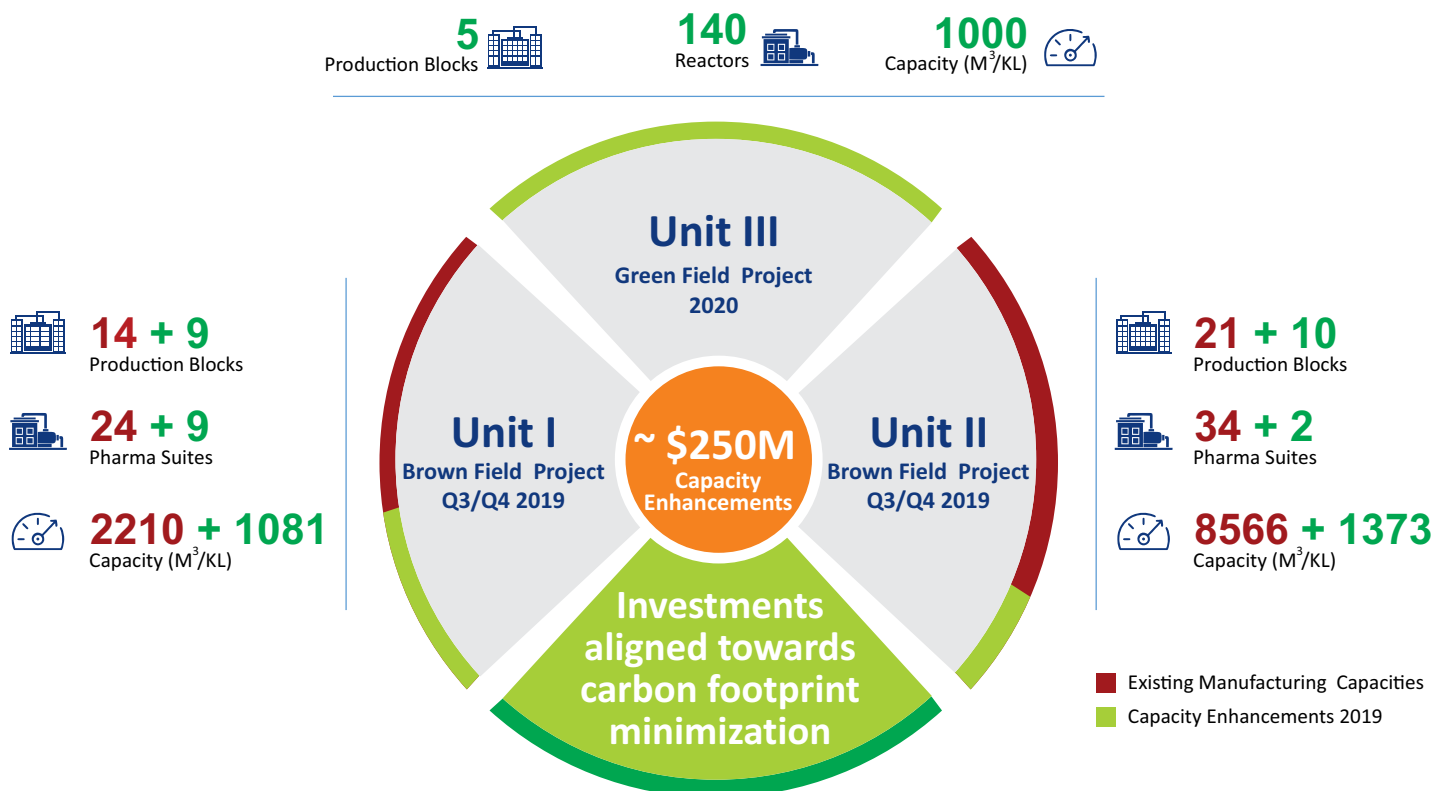
30

RECENT REGULATORY AUDITS



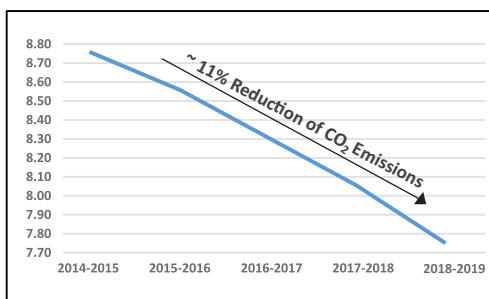
SUSTAINABLE DEVELOPMENT THROUGH INVESTMENTS

• ~25% INCREASE IN OVERALL CAPACITIES



REDUCTION OF CARBON FOOTPRINT

CO₂ Emissions/Ton of Manufactured Quantity

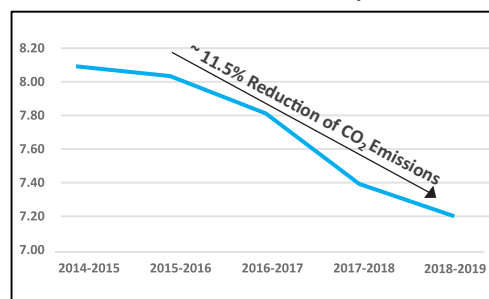


Graph 1

Graph 1 includes emissions from the following activities

Emissions from process
Emissions from dry ice/ CO₂ fire extinguishers
Emissions from thermal fluid heaters
Emissions from handling and disposal of food waste
Emissions from anaerobic treatment of waste water
Emissions from diesel consumed in incinerators
Emissions from LPG for cooking

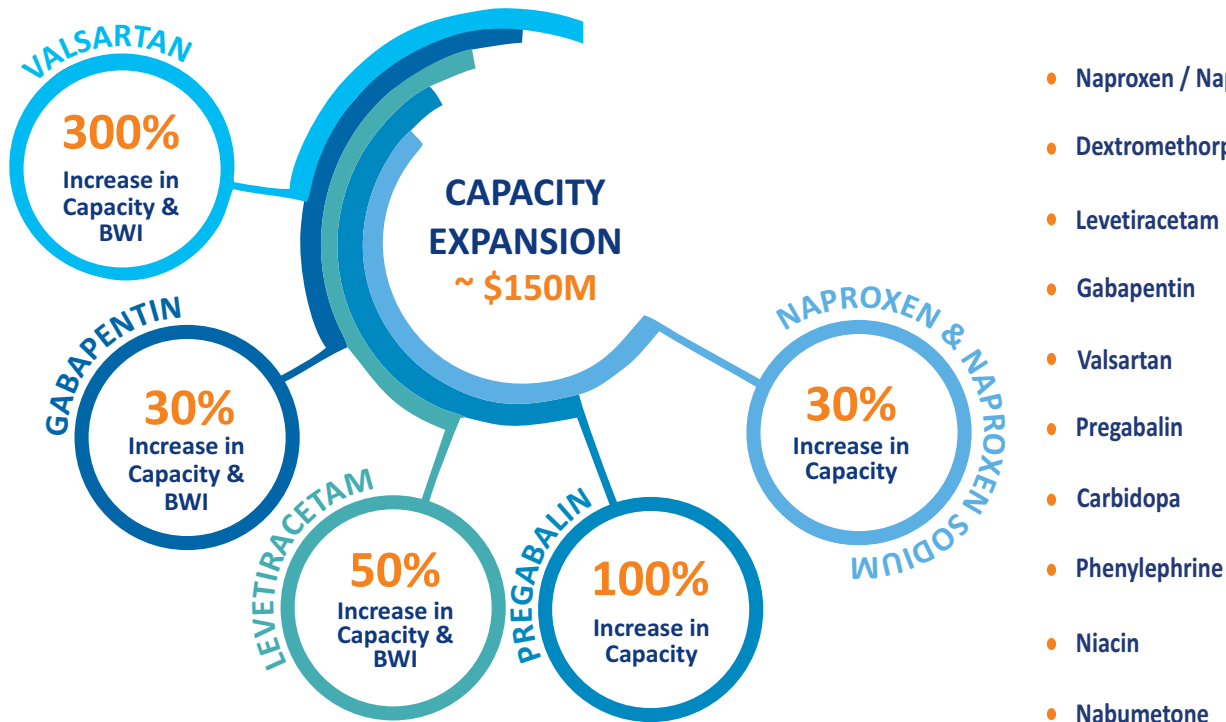
CO₂ Emissions/Ton from boiler operation of Manufactured Quantity



Graph 2

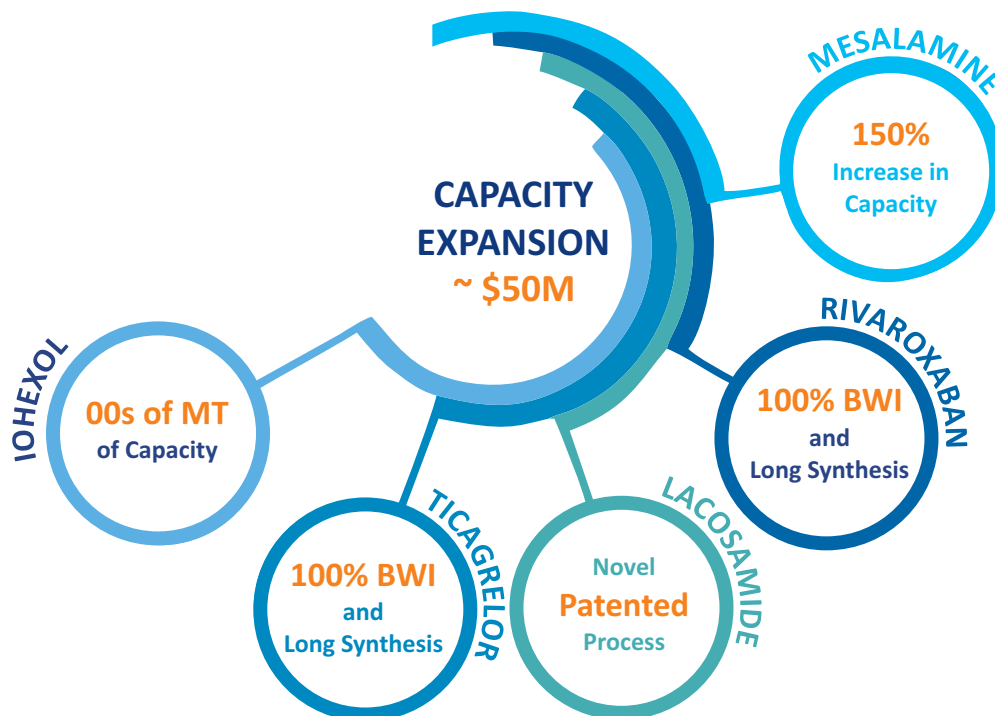
Divi's has set ambitious target to reduce carbon footprint by continually identifying opportunities for energy conservation and reduction in carbon emissions at our manufacturing sites. While total carbon footprint increased inline with enhanced production, various improvements resulted in reduction of scope-I carbon footprint per ton of manufactured quantity by ~11% over the past 5 Years.

FLAGSHIP GENERIC APIS



GENERIC APIS OF FOCUS

- Mesalamine
- Iopamidol / Iohexol
- Ranolazine
- Lacosamide
- Ticagrelor
- Rivaroxaban
- Vildagliptin
- Nicotine



* BWI - New Capacity for backward integration

LIST OF GENERIC APIs

Commercial Products

- Capecitabine
- Carbidopa
- Dextromethorphan Hbr.
- Diltiazem
- Fosphenytoin Sodium
- **Gabapentin**
- Iopamidol
- Irbesartan
- **Levetiracetam**
- Levodopa
- Mesalamine
- Nabumetone
- **Naproxen**
- **Naproxen sodium**
- Niacin
- **Orlistat**
- Phenylephrine Hcl.
- **Pregabalin**
- Proguanil Hcl.
- Quetiapine Fumerate
- Tamsulosin Hcl.
- Triprolidine Hcl.
- Valacyclovir Hcl.
- **Valsartan**
- Venlafaxine Hcl.
- Vigabatrin

Validations Completed

- Ranolazine
- Ticagrelor

Products under validation

- Iohexol
- Lacosamide

Sample Available

- Dolutegravir
- Ibudilast
- Mirabegron
- Nicotine
- Rivaroxaban
- Tenofovir Alfenamide
- Vildagliptin

Nutraceuticals

Human Health Animal Health

- | | |
|------------------|-----------------|
| • Beta- carotene | • Astaxanthin |
| • Lycopene | • Canthaxanthin |
| • Lutein | • Beta-Carotene |
| • Apocarotenal | |
| • Blends | |
| • Canthaxanthin | |
| • Vitamin D3 | |
| • Vitamin A | |

Disclaimer : Products covered by valid patents are not offered or supplied for commercial use.
It is the buyer's responsibility to ensure that transactions do not infringe any patent rights applicable.

HNH (Human Nutrition & Health)

Beta-Carotene

- Beta-Carotene 1% SD
- Beta-Carotene 1% SD/SF
- Beta-Carotene 1% SD/C
- Beta-Carotene Emulsion 1 %
- Beta-Carotene Emulsion 2 %
- Beta-Carotene Emulsion 5%
- Beta-Carotene Emulsion 10%
- Beta-Carotene 7.5% DC/AF
- Beta-Carotene 10% DG
- Beta-Carotene 10% DG/F
- Beta-Carotene 10% DC
- Beta-Carotene 10% DC/AF
- Beta-Carotene 15% DG
- Beta-Carotene 20% DC
- Beta-Carotene 20% DC/AF
- Beta-Carotene 20% DC/B
- Beta-Carotene 10% SUN
- Beta-Carotene 22% LF
- Beta-Carotene 30%
- Beta-Carotene 30% Sun

Lycopene

- Lycopene 5% DC
- Lycopene 10% DC/AF
- Lycopene 10% DC
- Lycopene 10% LF
- Lycopene 10% SUN
- Lycopene 20% LF

Lutein

- Lutein 5% DC/AFG
- Lutein 10% DC/AF
- Lutein 10% DC/B
- Lutein 20% LF
- Lutein 20% SUN
- Lutein 20% SUN/MT

Apocartenal

- Apocarotenal 1% SD/AG
- Apocarotenal 2%
- Apocarotenal 10 % DG

Canthaxanthin

- Canthaxanthin 10 % DG

Vitamin D3

- Vitamin D3 100 SD
- Vitamin D3 100 A
- Vitamin D3 100 DC/B
- Vitamin D3 1MIU

Vitamin D2

- Vitamin D2 100 SD
- Vitamin D2 1MIU/G

Vitamin E

- Vitamin E 25 DG/Q
- Vitamin E 50 DG/Q
- Vitamin E 50 SD/SSF
- Vitamin E 50 SD/S

Vitamin A

- Vitamin A Acetate 325 A
- Vitamin A Acetate 125 A

Natural Products

- AstaPure 2.5% VB*
- Beta-Carotene 7.5% DC/AFN*
- Beta-Carotene 10% DG/N*
- Beta-Carotene 20% DC/AFN*
- Beta-Carotene 30% N*

ANH (Animal Nutrition & Health)

Astaxanthin

- AstaFeed 2%
- AstaFeed 10%
- AstaPet 10%
- AstaFeed 10%AF/L

Beta-Carotene

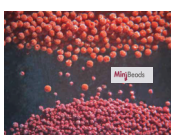
- BetaPet 10%

Canthaxanthin

- CanthaFeed 10%
- CanthaPet 10%



• Caro Clear Beta Carotene 1% SD*



• Mini Beads



• Caro Quik Beta Carotene 10% DG*

MEET TEAM DIVI'S



CPHI INDIA
26-28 November, 2019
New Delhi, India

DCAT
23-26 March, 2020
New York, US

BUSINESS MEET
March, 2020
Turkey

ACCREDITATIONS



GET IN TOUCH :

Divi Towers, 1-72/23(P)/DIVIS/303,
Cyber Hills, Gachibowli,
Hyderabad - 500 032, Telangana, India.
Ph : +90 40 6696 6300, Fax : +91 40 6696 6460

ENQUIRIES :

US : sales.us@divislabs.com
EU : sales.eu@divislabs.com
Others : sales@divislabs.com



www.divislabs.com